



QUICK START GUIDE

Congratulations! You are just moments away from connecting to your new WeatherStation® Instrument!



Airmar CAST™ is a mobile application that allows connection to your 300WX WeatherStation® Instrument. You can view data, adjust the outputs, program offsets and calibrate your sensor.

CAST features Basic and Advanced Modes, offering flexibility to users based on current conditions and individual experience. Users can add custom pages to display multiple data outputs.

SmartBoat® modules can connect wirelessly with the CAST app to gain access to the SmartFlex™ View software. The possibilities are nearly endless!

See <https://www.airmar.com/quick-start-guides> for the CAST User Guide and other valuable resources.



As Airmar constantly improves its products, all specifications are subject to change without notice. All Airmar products are designed to provide a high level of accuracy and reliability, however they should only be used as aids to navigation and not as a replacement for traditional navigation aids and techniques. WeatherStation® Instrument and SmartBoat® are registered trademarks of Airmar Technology Corporation. CAST™, SmartFlex™, and Smart™ are trademarks of Airmar Technology Corporation. Other company or product names mentioned in this document may be trademarks or registered trademarks of their respective companies, which are not affiliated with Airmar.

Step 1

Downloading CAST™ App

The Airmar CAST app is available for iOS and Android devices and can be downloaded free from the App Store or Google Play Store.

1. Go to the App Store (iOS) or Google Play Store (Android).
2. Search “Airmarcast” and install the free **AirmarCAST** app.
3. **Verify Bluetooth® is enabled on your mobile device.**
CAST automatically searches for sensors within range, so there is no need to connect to devices from the Bluetooth menu.

NOTE: Large objects like fuel tanks or bulkheads between the WeatherStation and the Smart Device can weaken the wireless signal strength. The strongest connection is next to or below the WeatherStation unit with a direct line of sight to the device.

4. Proceed to **Step 2, Initial Connection.**

The CAST app uses Bluetooth® Low Energy, which does not require pairing.



Step 2

Initial Connection

1. Ensure the WeatherStation is powered on.
2. Open the CAST app on your phone or tablet. Select your WeatherStation. The CAST app loads and the **Initial Connection** page opens.

NOTE: If multiple WeatherStations display, move to a less crowded area to perform the initial connection.

3. When prompted, allow the app to **Use your Location, Connect to Devices** and to **Use Bluetooth**. Prompts vary by device type.
4. Press the **Serial Number Digits** field and enter the last three (3) digits of the serial number (S/N) found on the label affixed to the device. If the label is not accessible, the S/N can be viewed on the NMEA 2000® network through a connected MFD (Multi Function Display).
5. If the S/N is not available, press the **FREEZE** button on the **Initial Connection** screen. When this button is pressed, the **Apparent Wind Angle** value is frozen for 90 seconds. After freezing, view the apparent wind angle value on your MFD or instrument. Enter the whole number value (no decimals) and press the check mark. Proceed to Step 3.

NOTE: You need to verify the S/N on the first connection. If you connect from another mobile device, use the **Forget Device** command, or delete and reinstall the Airmar CAST app on your mobile device, you will need the S/N again, so be sure to record and save it if the label isn't readily accessible.



Step 3

Customize Device

1. The **Customize Device** screen opens.
2. Select the icon for the Installation Type, such as **Mobile**, **Boat**, or **Stationary**.
3. Enter a **Friendly Name** for your sensor. This name, along with the sensor's S/N, are stored on your mobile device. The next time you connect to the sensor, CAST displays the sensor using the Model and the Friendly Name, i.e., **300WX_MyWeather**.
4. Press the checkmark to save changes and close the **Customize Device** page.

NOTE: The serial number and Friendly Name are also stored within the sensor. If you connect to the sensor using a different device, the Friendly Name will be displayed. Entering a Friendly Name will not affect names already saved on other devices.

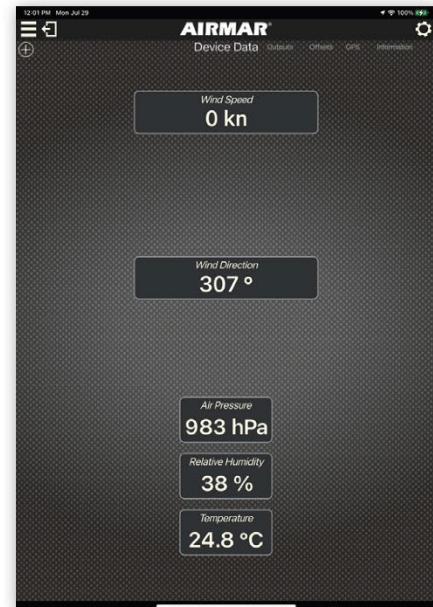


5. Press the **Settings** icon to display the **Unit Settings** for each data display, including **Metric**, **Imperial** and **Nautical**. Available units vary by Data Type.

Step 4

Initial Data Display

1. CAST displays the data available from the sensor. The default Home screen is **Device Data**, a graphic display of **Wind Speed** and **Direction**, and **Pressure**, **Relative Humidity**, and **Temperature**. Tap the screen to switch from **Graphic** to **Text** data output. **Press** and **Hold** a data display to change the data input.



2. For additional views, click the **Add Page** (+) button at the screen top, left.
3. Choose a **Page Layout**, then press the **Add Data** (+) button to select from the various **Data Types**, including **Maps**, **Headings**, **Barometer**, **Humidity**, and more.

Step 5

Compass Calibration

1. Make sure the boat, tractor, or vehicle is stopped.
2. Navigate to the **Offsets** page in the main toolbar.

NOTE: For Stationary/Office installs, proceed to number 5, below. These installations do not require compass calibration. Instead, the Alignment Notch is set to true North at installation. See the **Installation Guide** for more information.

3. Tap the wand in **Compass Calibration** and follow the instructions on screen.
4. When ready, begin travelling in a circle. Press the START COMPASS CALIBRATION button and the app begins calculating the compass position. A message displays when **Compass Calibration** is complete. When successful, a green check mark displays.
5. With a stationary install, or the vehicle/vessel level and stable side-to-side and fore-to-aft, check the **Pitch** and **Roll** values. If they are not zero (0) degrees, press the **Down** arrow button, then press the **Hold to calibrate** button. The app calculates an average pitch and roll reading over 10 seconds.
6. When complete, the sensor should read approximately 0 degrees for both **Pitch** and **Roll**.



*For additional instructions, refer to the CAST User Guide
for Compass Calibration information.*